



Technical Specification

DN60 High Pressure Oscillatory Baffled Reactor / Crystalliser (OBRC)

Alconbury Weston Limited
Tel: +44 (0) 1782413427
www.a-w-l.co.uk
enquiries@a-w-l.co.uk

Company Registered in England No. 4890104

Overview:

This Oscillatory Baffled Reactor / Crystalliser (OBRC) has been manufactured for the intended use of evaluating the potential benefits of OBR mixing with particular chemical reactions / crystallisations / processes. It will allow the investigation of the fundamental kinetics and the critical process parameters such as reactant ratios, cooling rates, temperatures, addition rates etc. and what effects the baffled mixing can bring. These results can then be taken and scaled-up with minimal scale-up effects.

The unit can be supplied with a single or twin vessel configuration, both configurations fit on the same reactor framework. Twin vessel configurations are supplied such that they can be used as two individual batch vessels or connected together to work as a chain of stirred tanks, this vastly increases the flexibility of the unit and allows much easier integration into continuous processing streams.

Operating Parameters:

Temperature Range:	-20°C ~ +120°C
Oscillator Frequency:	0.1 Hz ~ 6.0 Hz in 0.1 Hz increments
Oscillator Amplitude / Stroke:	5 mm ~ 150 mm in 1 mm increments
Pressure:	-1 to 10 Bar G

Although the above conditions are individually possible, no guarantees can be given for any particular combination. For instance, the total speed of the oscillator is limited by the motor and controller so a frequency of 6 Hz can be achieved at smaller amplitudes but not necessarily at the largest oscillation.

Materials Of Construction:

The wetted parts of the OBRC are manufactured, as standard, from the following materials:

Vessel:	316L Stainless Steel
Drain Valve:	316L Stainless Steel / FEP
Baffle String:	316L / PEEK
Seals:	PTFE / FEP

Weight and Dimensions:

Weight approx.: 400kg
Dimensions: 1000 x 650 x 2500 mm (width x depth x height)

The above dimensions are of the footprint of the unit without castors. A further space of 100mm should be allowed all around the reactor to allow for connections of services etc.

System:

Reaction Vessel:

The standard scope of supply includes one, fully jacketed, DN60 reaction vessel:

1.6m working length / 4.5 litre vessel with a 4.25 litre working volume.

The vessel is complete with a fully sealed cap, baffled agitator, jacket heating connections, bottom outlet valve, and process inlet / PAT connection points. The bottom outlet valve is specially adapted to allow for its complete removal and the fitting of a sparger for gas/liquid reactions.

The OBRC vessel and baffle design provides high intensity, low shear mixing with a large jacket area to process volume allowing for precise control over process temperatures. The unit can be supplied with a single vessel or twin vessel configuration. The twin configuration allows much more flexibility and offers the end user the chance to integrate the reactor into many continuous and semi-continuous processes.

The twin vessel configuration is mounted on the same frame as the single vessel systems and therefore occupies the same footprint. It is always possible to upgrade a single vessel to a twin vessel unit at a later date.

Drive Mechanism:

A linear gearbox drives a high powered permanent magnetic coupling which drives the baffle indirectly through a fully sealed vessel using the magnetic forces. This enables the vessel to be manufactured with no moving seals thereby vastly prolonging the service intervals. The gearbox is driven by a high precision servo motor and the coupling / baffle string are balanced with a counterweight to increase the overall electrical efficiency of the unit. The counterweight can be removed and replaced with a second vessel at the time of order or at any time post purchase.

Support Structure:

The reaction vessel is supported by a stainless steel support structure. The rear upper framework houses the servo motor, gearbox and other moving parts whilst the lower rear section of the support structure houses the control panel.

Representative Example:

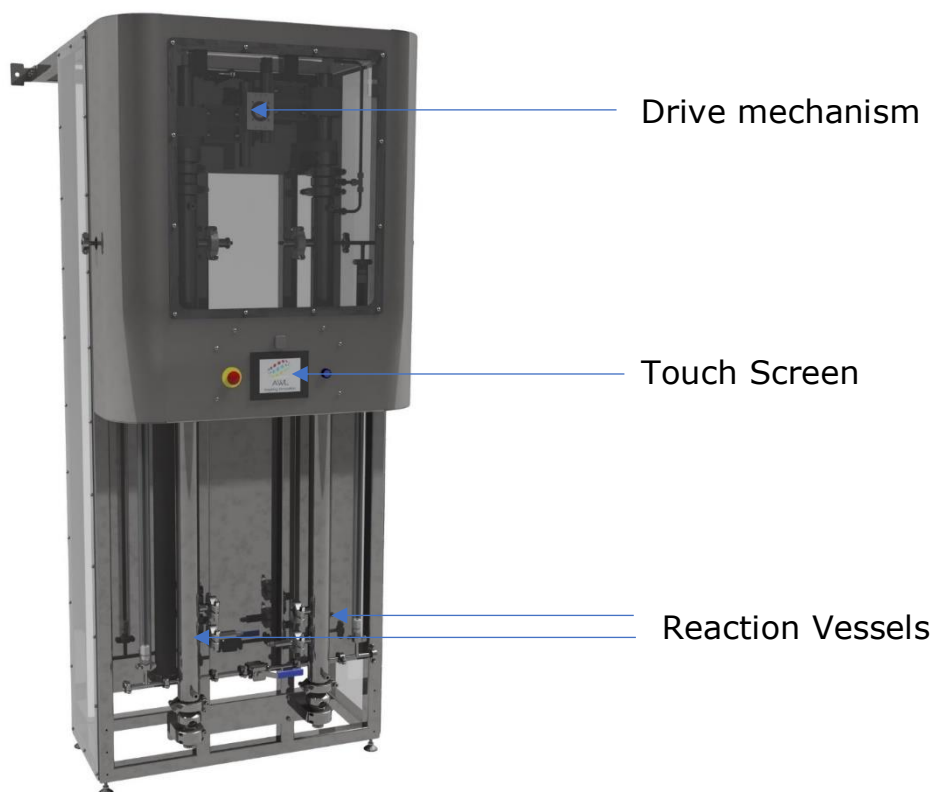


Figure 1: DN60 OBRC Complete System

General Arrangement:

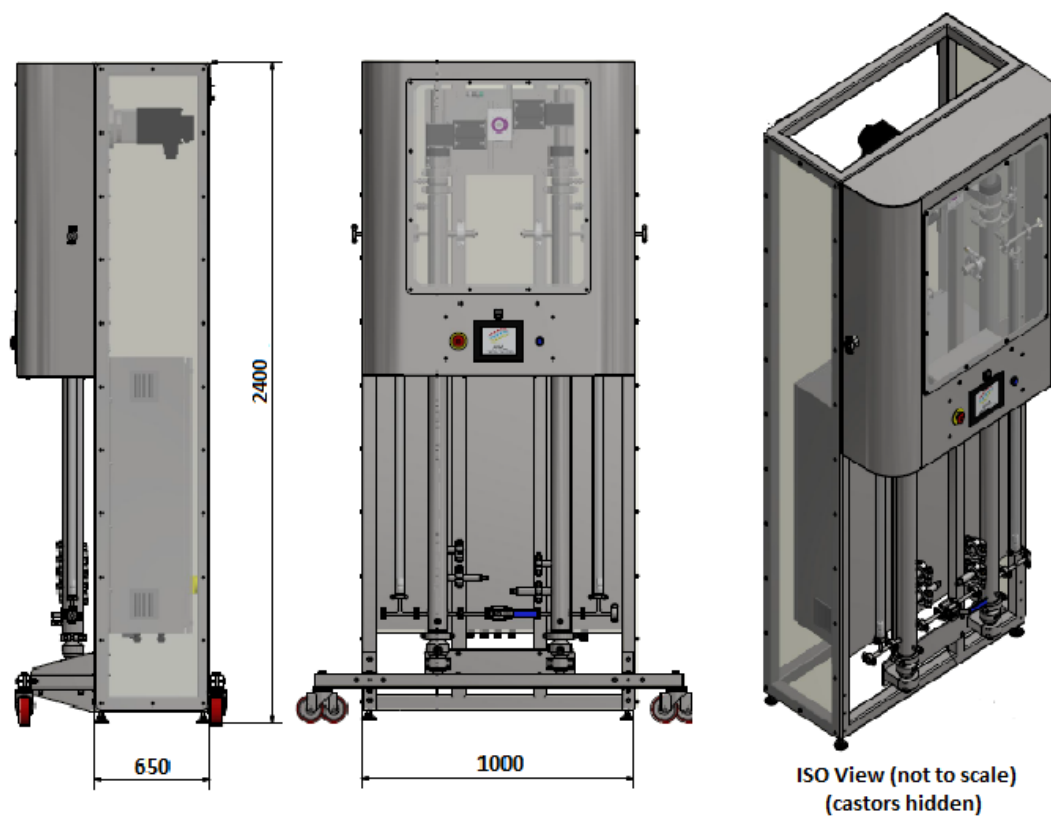
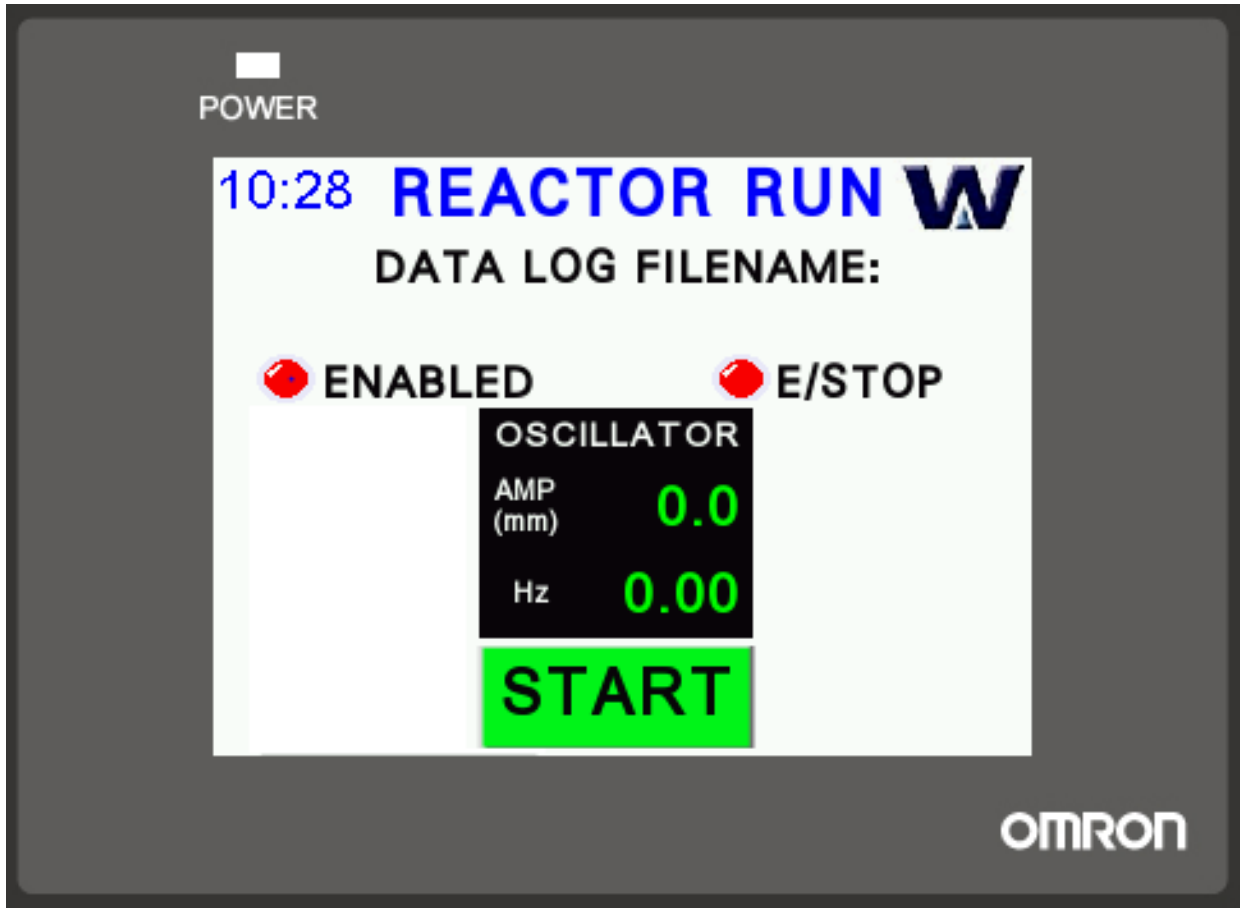


Figure 2: General Arrangement (For Illustration Only)

Operator Panel:

Mounted on the front guard are the touch screen HMI, reset and emergency stop buttons. The HMI is used to start and stop the oscillator as well as adjusting the frequency and amplitude of oscillation.

The panel also indicates the state of the safety circuit which is controlled by the oscillator drive controller and the inbuilt pressure transmitter safety controller.



Control System:

The control system cabinet houses the PLC, drive controller, safety circuits, fuses, power isolator and other electronics. The cabinet is mounted on the rear side of the OBRC framework.

Electrical Specifications:

Supply: 3 phase, N and Bonded Earth, 400 Volts, 50 Hz

The supply must be fed to the machine in a conduit that is grounded to the enclosure. The machine operating current is up to 16 Amp.

Temperature: The system is designed to be operated in an ambient temperature of between 0 – 50°C. (140F). Storage should be within an ambient temperature range of 0 to 65°C and a relative humidity range of 5 to 95% non-condensing.

Standards and Directives:

AWL's COBC range is manufactured as standard to meet the following European directives and harmonised standards:

2014/35/EU
Low Voltage Directive

2014/68/EU
Pressure Equipment Directive

2004/108/EC
Electromagnetic Compatibility Directive

EN 13849-1 : 2015
Safety of Machinery – Safety related parts of control systems

EN ISO 12011 : 2010
General principles for design. Risk assessment and Risk Reduction

EN 61000-6-4 : 2007
Generic Immunity Standard – Industrial Environment
EN 61000-6-6 : 2003
Generic Emission Standard – Industrial Environment

Options:

The following options are outside the standard scope of supply but can be provided on request

Increased operating pressure (up to 25bar)
Increased operating temperature (up to 200°C)
Twin reaction vessels
Reactor mounted and HMI controlled high or low pressure pumps
Larger HMI touch screen
Additional and bespoke connection / PAT points
Sparge insert for gas / liquid reactions
DCS control
Sight glass / level indicator
ATEX Compliance
Temperature controlled lines in & out
Separate control and / or operating panel
Alternative electrical specification to suit final destination
Alternative materials of construction / wetted parts

For further information

please contact: enquiries@a-w-l.co.uk ***or visit:*** www.a-w-l.co.uk