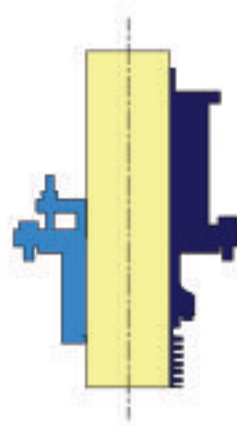
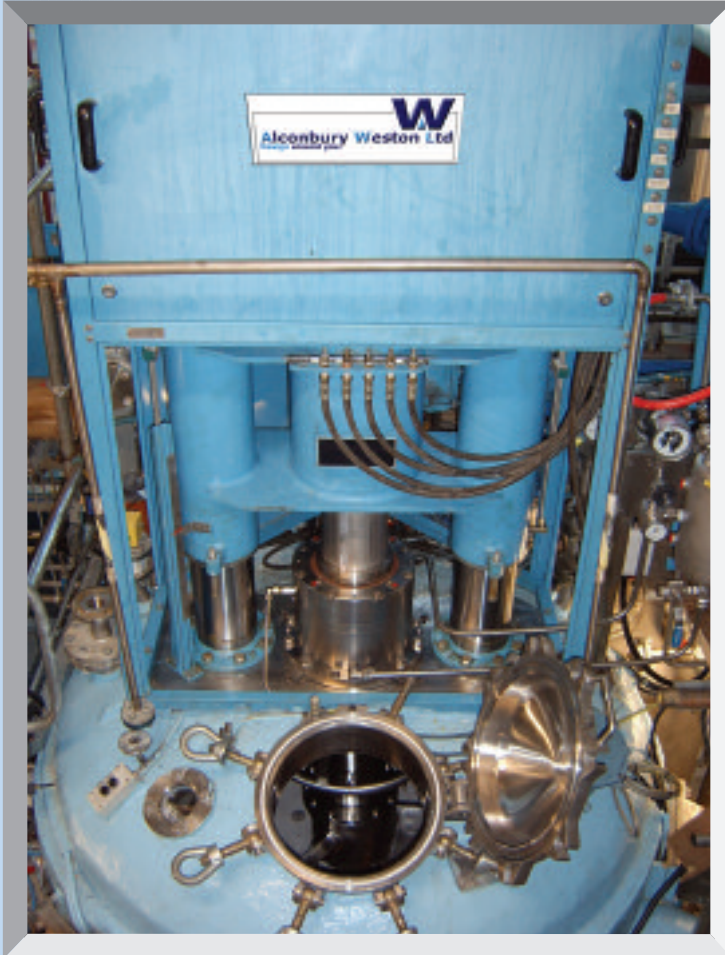


Upgrade

Stuffing Box to Mechanical Sealing & Bellows conversion



*Contact Alconbury
Weston to assist
with all your
future processing
equipment
requirements*

- On site conversions
- Minimal disruption to production
- cGMP designs
- Eliminate batch contamination
- Re-use of existing major components
- Fast turnaround
- Warranty



INDEPENDENT SPECIALISTS IN FILTRATION & DRYING SYSTEMS

Tel: +44 1785 240 966 · Fax +44 1785 258 553 · www.a-w-l.co.uk

Upgrade

Stuffing Box to Mechanical Sealing & Bellows conversion

Upgrade your sealing technology with state of the art double mechanical sealing and bellows, cGMP design.

Our systems comply with the most stringent QA and cGMP requirements:

- Dry or Wet running double sealing units
- Sanitary glands
- Gas supply panels and Seal pot systems
- Seal monitoring instrumentation
- Meeting your ATEX requirements with the appropriate design and documentation
- Meeting your cGMP requirements
- Improved vessel sealing
- Lowering emissions to the atmosphere and operator exposure levels
- Reduced maintenance
- Eliminating shedding of packing into your batch
- Metal expansion bellows

These systems are designed to:

- Upgrade your equipment without the need to replace major components
- Use existing stuffing box flange bolting PCD for installation
- Retain existing agitator drive system
- Retain existing agitator and main shaft
- Complete the installation at your facility
- Provide full on-site testing - "FAT - SAT" support
- Provide fast turnaround and cost effective solutions



Before

After

INDEPENDENT SPECIALISTS IN FILTRATION & DRYING SYSTEMS

Tel: +44 1785 240 966 · Fax +44 1785 258 553 · www.a-w-l.co.uk