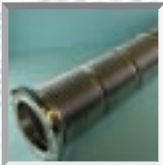
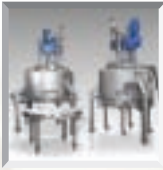


AWL-Suppliers of New and Remanufactured Pharmaceutical Processing Systems



*Our satisfaction comes from **your** success*

New Equipment

Supply of **New Equipment**



Filter & Dryer Systems

- 0.002m² to 8m² +
- Filters
- Filters / Dryers
- Spherical Dryers
- Skid Mounted Systems
- ASME, PED, AD Merkblätter, TÜV, SVTI
- 316L and Hastelloy Construction Materials
- cGMP Designs
- Rental / Trial units available
- PLC and DCS control systems
- 'FAT to SAT' support

Upgrade

Upgrade Solutions



On-Site and Off-Site Solutions

- Stuffing Box to Mechanical Sealing conversions
 - Discharge Valve improvements and new installations
 - From Discharge Valve to Glove-Box Isolator
 - Central discharge to Segmented Valve conversions
 - ATEX certified hydraulic Power Packs
 - Agitator Drive systems
 - Filter media conversions
- and more.....



Remanufactured

Supply of **Remanufactured Solutions**



- Used equipment sourcing and inspection
- Complete remanufactured to 'as new' condition
- 'Cost effective' solutions
- 'As new' warranty
- ATEX compliant systems
- EU machinery directive compliance
- CE certifiable
- cGMP Designs
- Rental / Trial units available
- PLC and DCS control systems
- 'FAT to SAT' support

Service

Service



- 'In-production' inspections
- Planned Maintenance
- Unplanned/Breakdown support
- 7 day a week response
- 24hr contact with experienced personnel
- Service report on completion
- Service contracts

Europe's most experienced filter dryer service team

Contact Alconbury Weston to assist with all your future processing equipment requirements

Spare Parts



- Supply for a wide range of filtration and drying equipment
- ISO 9001 Quality management
- 100m² stock holding location
- In-house CAD design of components
- Component refurbishment solutions
- FDA compliant materials for product contact
- Filter media welding repairs
- CNC manufacture

Lab Scale

Lab Scale Pocket Filters



Manufacture Range

- 0.002m² + filtration area available in glass, 316L and Hastelloy materials, complete with agitator and heated jacket options.

Process Optimisation

- Vital "like for like" lab bench to production scale process data, in advance of full scale production.
- Simple cleanable design
- FDA approved elastomers
- Validation documentation available
- Demonstrations available on request

Kammerer

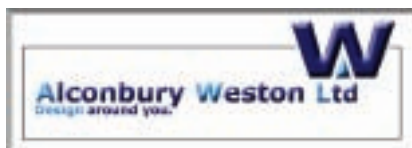
World leaders in Knife Gate Valve Technology

AWL is the exclusive agent for supplying Kammerer slide gate valves and spare parts in the UK and Ireland. They are robust shut-off elements which have proved successful for decades. The Kammerer design flexibility allows them to be used as cutting slide valves for feeding and discharging of products. Manufactured in a variety of materials including 316L and Hastelloy wetted parts.

Sizes from DN20 to DN800, plus special designs available.



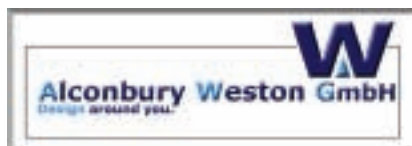
Our Facilities



Lichfield Road, Stafford, Staffordshire ST17 4UQ
Tel: +44(0)1785 240 966 · Fax: +44(0)1785 258 553
enquiries@a-w-l.co.uk · www.a-w-l.co.uk



Little End Road, Eaton Socon, St Neots, Cambridgeshire PE19 8EH
Tel: +44(0)1480 472 385 · Fax: +44(0)1480 471 555
enquiries@a-w-l.co.uk · www.a-w-l.co.uk



Aeschenvorstadt 71, CH-4051 Basel
Tel: +41(0)61 225 42 81 · Fax: +41(0)61 225 44 10
enquiries@awgmbh.ch · www.awgmbh.ch



INDEPENDENT SPECIALISTS IN FILTRATION & DRYING SYSTEMS